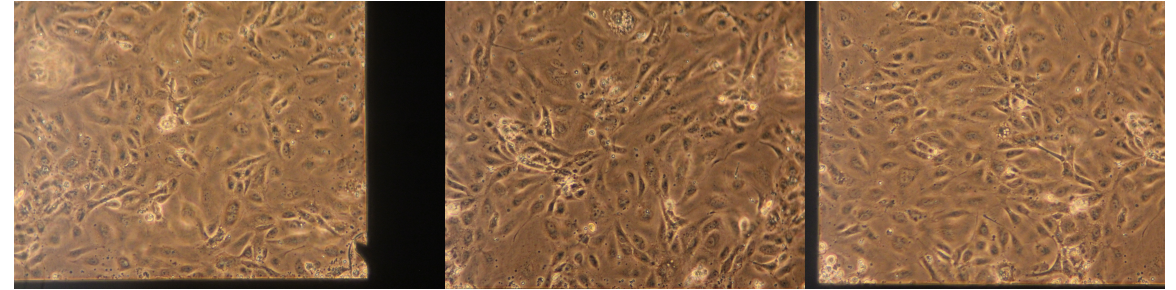


Bottom Channel, Back side Aline

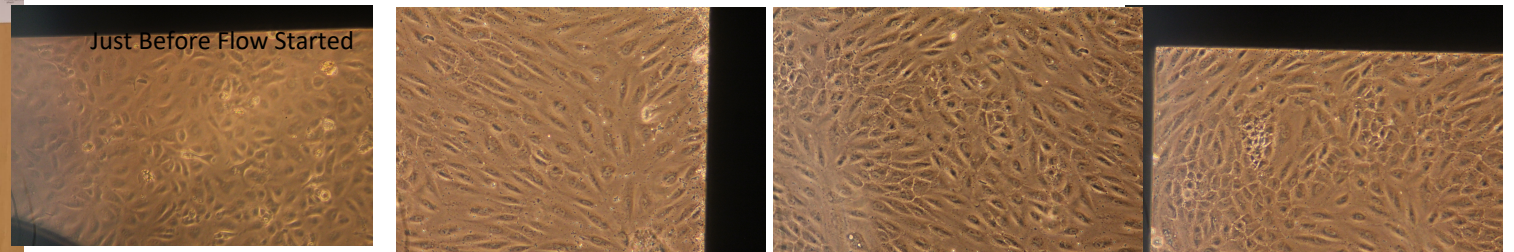


Two Alines hooked to our flow system
Reservoirs ~ 14 inches apart.
Placed in cell culture incubator

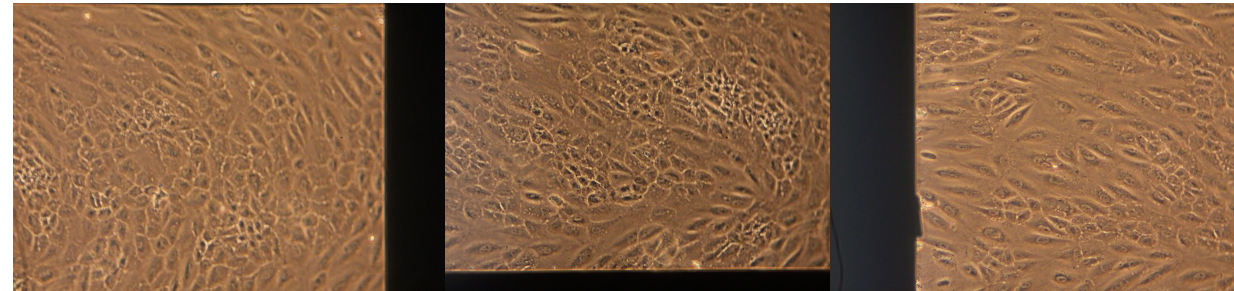
Static Control



1st in tandem

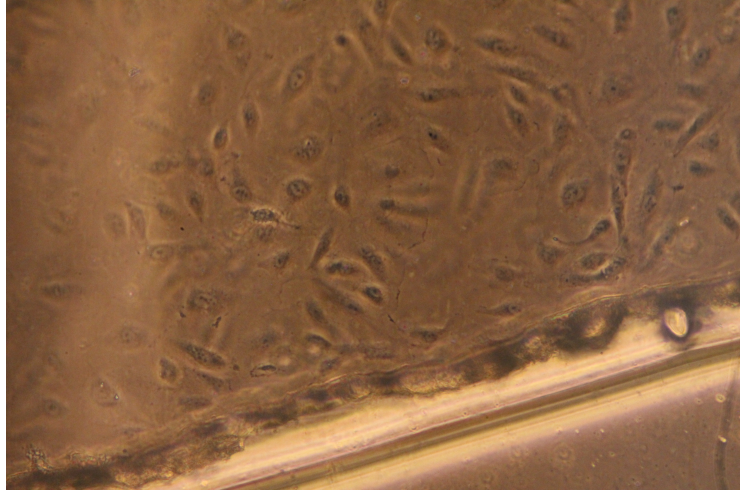


2nd in tandem

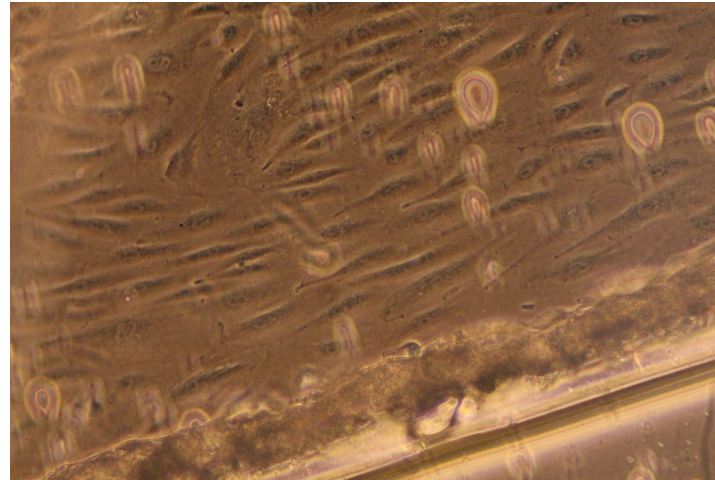


Three Alines seeded 5/26/21.
Two attached to flow system to left 5/27/21
 $Q=2.1 \text{ mL/min}$ (10 dynes/cm^2)
Flow ran ~19 hours (cut short because of holiday weekend)

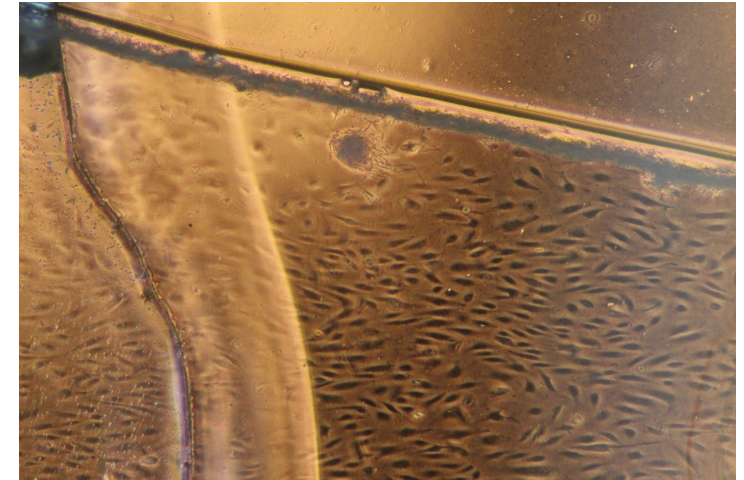
I didn't see alignment on membrane (@10dynes/cm² for 19 hours) but I did have alignment started in channel just before chip. Shear Stress= ~ 20 dynes/cm² at this location.



Static Aline: Side of channel



Flowed: 19hrs Side of channel
 ~ 20 dynes/cm²



Flowed: 19hrs Side of channel
 ~ 20 dynes/cm²